

Standard Roll End Bearings

1 3/8" Thru 4" Tubing-pipe O.D.

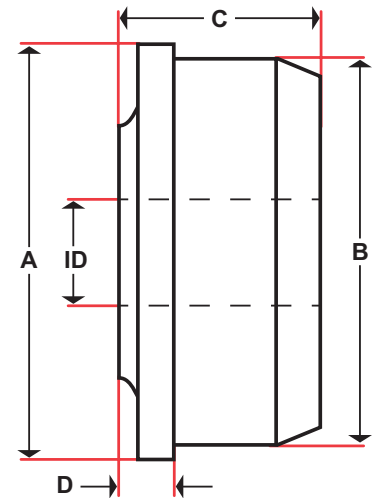
ID Specify shaft Diameter in part number (Ex: 1/2, 3/4, etc.)

Add "M" to end of part number if application is wet or moist.

A full line of conveyor roll end bearings, including standard, light duty, free-draining, blind-bore, V-grooved or conical bearings, for any standard pipe or tubing from 1/2" 20 gauge tube through 6", schedule-40 pipe are also available. Non-standard pipes can also be accommodated.

Part No.	A = Tubing/Pipe OD	Tubing/Pipe Gage	B = Tubing/Pipe ID	Tubing/Pipe Wall	C = Overall Length	D = Flange + Boss
1118WR 1116WR	1 3/8	18 16	1.277 1.245	0.049 0.065	1 1/4	1/4
1218WR 1216WR 1214WR	1 1/2	18 16 14	1.402 1.370 1.334	0.049 0.065 0.083	1 1/2	1/4
10EMWR	(1 1/4" EMT) 1.510	EMT	1.380	0.065	1 1/2	1/4
1316WR 1311WR	1 5/8	16 11	1.495 1.385	0.065 0.120	1 1/2	1/4
10P4WR	(1 1/4" PIPE) 1.660	SCH 40	1.380	0.140	1 1/2	1/4
12EMWR	(1 1/2" EMT) 1.740	EMT	1.610	0.065	1 1/2	1/4
1416WR 1414WR 1413WR 1411WR	1 3/4	16 14 13 11	1.620 1.584 1.560 1.510	0.065 0.083 0.095 0.120	1 1/2	1/4
1516WR 1513WR	1 7/8	16 13	1.745 1.685	0.065 0.095	1 1/2	1/4
12P4WR 12P8WR	(1 1/2" PIPE) 1.900	SCH 40 SCH 80	1.610 1.500	0.145 0.200	1 1/2	1/4
1618WR 1616WR 1614WR 1613WR 1611WR	2	18 16 14 13 11	1.902 1.870 1.834 1.810 1.760	0.049 0.065 0.083 0.095 0.120	1 5/8	3/8
16EMWR	(2" EMT) 2.197	EMT	2.067	0.065	1 5/8	3/8
1818WR 1816WR 1814WR 1813WR 1811WR 1810WR	2 1/4	18 16 14 13 11 10	2.152 2.120 2.084 2.060 2.010 1.982	0.049 0.065 0.083 0.095 0.120 0.134	1 5/8	3/8
1916WR 1913WR 1911WR	2 3/8	16 13 11	2.245 2.185 2.135	0.065 0.095 0.120	1 5/8	3/8
16P4WR 16P8WR	(2" PIPE) 2.375	SCH 40 SCH 80	2.067 1.939	0.154 0.218	1 5/8	3/8
2016WR 2014WR 2013WR 2011WR 2010WR	2 1/2	16 14 13 11 10	2.370 2.334 2.310 2.260 2.232	0.065 0.083 0.095 0.120 0.134	1 5/8	3/8
2216WR 2213WR 2211WR	2 3/4	16 13 11	2.620 2.560 2.510	0.065 0.095 0.120	1 5/8	3/8
20P4WR	(2 1/2" PIPE) 2.875	SCH 40	2.469	0.203	1 5/8	3/8
2416WR 2414WR 2413WR 2411WR	3	16 14 13 11	2.870 2.834 2.810 2.760	0.065 0.083 0.095 0.120	1 3/4	3/8
2616WR 2613WR	3 1/4	16 13	3.120 3.060	0.065 0.095	1 3/4	3/8
24P4WR 24P8WR	(3" PIPE) 3.500	SCH 40 SCH 80	3.068 2.900	0.216 0.300	1 3/4	3/8
2816WR 2813WR 2811WR	3 1/2	16 13 11	3.370 3.310 3.260	0.065 0.095 0.120	1 3/4	3/8
3016WR 3011WR	3 3/4	16 11	3.620 3.510	0.065 0.120	1 3/4	3/8
28P4WR	(3 1/2" PIPE) 4.000	SCH 40	3.548	0.226	1 3/4	3/8
3216WR 3214WR 3213WR 3211WR	4	16 14 13 11	3.870 3.834 3.810 3.760	0.065 0.083 0.095 0.120	1 3/4	3/8

CUSTOM SIZES AVAILABLE UPON REQUEST



WOODEX Bearing Company, Inc.

216 Bay Point Road
Georgetown, ME 04548 USA
800 526 8800 toll-free in North America or
+1 207 371 2210 • Fax: +1 207 371 2169
Email: sales@woodex-meco.com



Made in USA