

## Fully Split, FDA-Approved Ceramic Filled PTFE Hanger Bearings

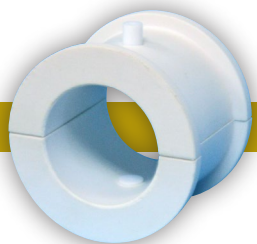
MECO 3120 is a malleable, bearing grade material that combines the wear resistance found in ceramics with the dry lubrication provided by PTFE. It is a dry-running, high performance bearing material made possible by incorporating a heavily-loaded ceramic fill in a high-end PTFE matrix.

### The result is a hanger bearing with the following attributes:

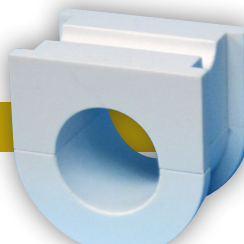
- Low Coefficient of friction
- Toughness
- High abrasion resistance
- Low wear rates
- Suitable for a broad range of chemical environments
- Fully split
- High temperature capabilities
- More resilient than brittle, pure ceramic
- High load capacity
- Serviceable in a wet, dry or wet-dry environment
- FDA-Approved material
- Available to ship in 1 to 3 days

Woodex Bearing Company's MECO 3120 is a complement to our traditional, fully split oil impregnated, rock maple "Woodex" hanger bearings. The back page lists our readily available standard stock sizes. Special requests are also available typically within 3-5 weeks.

TYPE 226



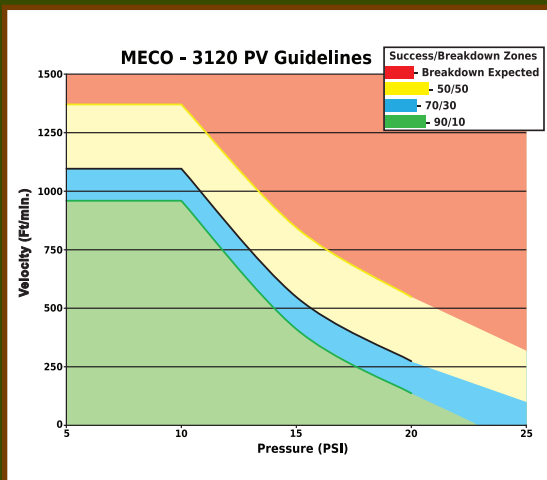
TYPE 216



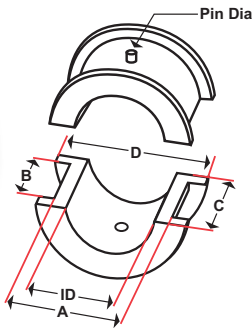
### TYPICAL PHYSICAL PROPERTIES

PROPERTY	TEST	VALUE	UOM
Tensile Strength	ASTM D-4984	2586	psi
Elongation	ASTM D-4894	284	%
Specific Gravity	ASTM D-4745	2.19	g/cm <sup>3</sup>
Wear Factor (K) X 10 <sup>10</sup>		1.0	ln <sup>3</sup> -min/lb-ft-hr
Coefficient of Friction Static @ 33 psi Dynamic @ 33 psi		0.20 .023	
Deformation Under Load 73deg, 2000 psi 24hrs MD CD	D-621	4.4 6.2	%

Raw materials used in production of this product meet the FDA and USDA requirements for food contact applications.



# MECO 3120 HANGER BEARINGS STOCKED SIZES

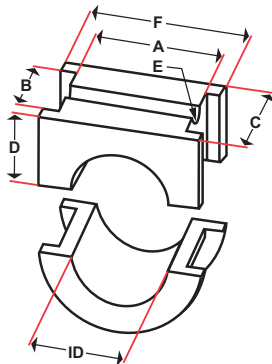
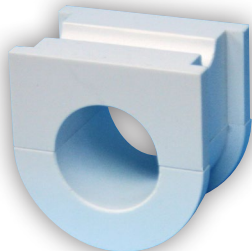


MECO 3120 CB1500-226

## SCREW CONVEYOR HANGER BEARINGS: TYPE 226

Fits hanger styles 226, 220, 326, 20B, 26B, 28B

Part No.	ID	A	B	C	D
CB1500-226	1 <sup>1</sup> / <sub>2</sub>	2 <sup>1</sup> / <sub>8</sub>	1 <sup>9</sup> / <sub>16</sub>	1 <sup>15</sup> / <sub>16</sub>	2 <sup>1</sup> / <sub>2</sub>
CB2000-226	2	2 <sup>3</sup> / <sub>4</sub>	1 <sup>9</sup> / <sub>16</sub>	1 <sup>15</sup> / <sub>16</sub>	3 <sup>1</sup> / <sub>8</sub>
CB2716-226	2 <sup>7</sup> / <sub>16</sub>	3 <sup>1</sup> / <sub>4</sub>	2 <sup>3</sup> / <sub>8</sub>	2 <sup>15</sup> / <sub>16</sub>	3 <sup>3</sup> / <sub>4</sub>
CB3000-226	3	4	2 <sup>3</sup> / <sub>8</sub>	2 <sup>15</sup> / <sub>16</sub>	4 <sup>1</sup> / <sub>2</sub>
CB3716-226	3 <sup>7</sup> / <sub>16</sub>	4 <sup>3</sup> / <sub>4</sub>	3 <sup>1</sup> / <sub>8</sub>	3 <sup>15</sup> / <sub>16</sub>	5 <sup>1</sup> / <sub>2</sub>



MECO 3120 CB1500-216

## SCREW CONVEYOR HANGER BEARINGS: TYPE 216

Fits hanger styles 216, 230, 316, 16B & 216F

Part No.	ID	A	B	C	D	E (Dia.)	F
CB1500-216	1 <sup>1</sup> / <sub>2</sub>	2 <sup>1</sup> / <sub>4</sub>	1 <sup>3</sup> / <sub>8</sub>	1 <sup>15</sup> / <sub>16</sub>	1 <sup>3</sup> / <sub>8</sub>	9 <sup>9</sup> / <sub>16</sub>	2 <sup>3</sup> / <sub>4</sub>
CB2000-216	2	3 <sup>1</sup> / <sub>4</sub>	1 <sup>5</sup> / <sub>8</sub>	1 <sup>15</sup> / <sub>16</sub>	1 <sup>5</sup> / <sub>8</sub>	9 <sup>9</sup> / <sub>16</sub>	3 <sup>3</sup> / <sub>4</sub>
CB2716-216	2 <sup>7</sup> / <sub>16</sub>	4	2 <sup>3</sup> / <sub>8</sub>	2 <sup>15</sup> / <sub>16</sub>	2 <sup>1</sup> / <sub>8</sub>	9 <sup>9</sup> / <sub>16</sub>	4 <sup>1</sup> / <sub>2</sub>
CB3000-216	3	4 <sup>1</sup> / <sub>2</sub>	2 <sup>1</sup> / <sub>8</sub>	2 <sup>15</sup> / <sub>16</sub>	2 <sup>1</sup> / <sub>4</sub>	9 <sup>9</sup> / <sub>16</sub>	5
CB3716-216	3 <sup>7</sup> / <sub>16</sub>	4 <sup>7</sup> / <sub>8</sub>	2 <sup>11</sup> / <sub>16</sub>	3 <sup>15</sup> / <sub>16</sub>	2 <sup>7</sup> / <sub>16</sub>	11 <sup>11</sup> / <sub>16</sub>	5 <sup>1</sup> / <sub>2</sub>

## Woodex Bearing Company Inc.

216 Bay Point Road, Georgetown ME 04548 USA

Phone 1 207 371 2210 • Toll-free in North America 1 800 526 8800 • Fax 1 207 371 2169

www.woodexbearing.com • Email sales@woodexbearing.com

© 2016 Woodex Bearing Company, Inc. All rights reserved



www.woodexbearing.com

