



# Light Duty Roll End Bearings

1 1/4" Thru 2 1/2" Tubing-pipe O.D.

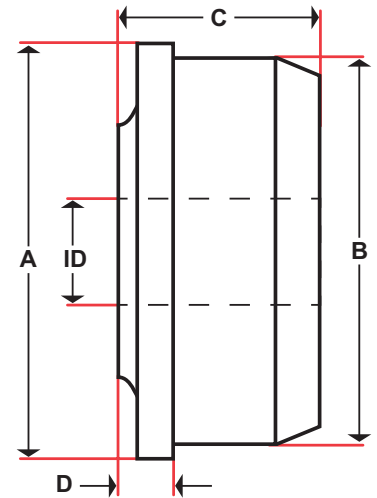
ID Specify shaft Diameter in part number (Ex: 1/2, 3/4, etc.)

Add "M" to end of part number if application is wet or moist.

A full line of conveyor roll end bearings, including standard, light duty, free-draining, blind-bore, V-grooved or conical bearings, for any standard pipe or tubing from 1/2" 20 gauge tube through 6", schedule-40 pipe are also available. Non-standard pipes can also be accommodated.

Part No.	A = Tubing/Pipe OD	Tubing/Pipe Gage	B = Tubing/Pipe ID	Tubing/Pipe Wall	C = Overall Length	D = Flange + Boss
1020WL 1018WL 1016WL	1 1/4	20 18 16	1.180 1.152 1.120	0.035 0.049 0.065	3/4	3/16
8P4WL	1.315 (1"PIPE)	SCH40	1.049	0.133	3/4	3/16
1118WL 1116WL	1 3/8	18 16	1.277 1.245	0.049 0.065	3/4	3/16
1220WL 1218WL 1216WL	1 1/2	20 18 16	1.430 1.402 1.370	0.035 0.049 0.065	1	1/4
10EMWL	1.510 (1 1/4"EMT)	EMT	1.380	0.065	1	1/4
1320WL 1318WL	1 5/8	20 18	1.555 1.527	0.035 0.049	1	1/4
12EMWL	1.740 (1 1/2"EMT)	EMT	1.610	0.065	1	1/4
1420WL 1418WL 1416WL	1 3/4	20 18 16	1.680 1.652 1.620	0.035 0.049 0.065	1	1/4
1520WL 1518WL 1516WL	1 7/8	20 18 16	1.805 1.777 1.745	0.035 0.049 0.065	1	1/4
12P4WL	1.900 (1 1/2"PIPE)	SCH 40	1.610	0.145	1	1/4
12P8WL		SCH 80	1.500	0.200	1	1/4
1620WL 1618WL 1616WL	2	20 18 16	1.930 1.902 1.870	0.035 0.049 0.065	1	1/4
16EMWL	2.197 (2"EMT)	EMT	2.067	0.065	1	1/4
1820WL 1818WL 1816WL	2 1/4	20 18 16	2.180 2.152 2.120	0.035 0.049 0.065	1	1/4
2020WL 2018WL 2016WL	2 1/2	20 18 16	2.430 2.402 2.370	0.035 0.049 0.065	1	1/4

CUSTOM SIZES AVAILABLE UPON REQUEST



**WOODEX** Bearing Company, Inc.

216 Bay Point Road  
Georgetown, ME 04548 USA  
800 526 8800 toll-free in North America or  
+1 207 371 2210 • Fax: +1 207 371 2169  
Email: sales@woodex-meco.com



**Made in USA**

**WOODEX DATA SHEET 102-L**